

KUMMERT

PROFI NG



PROFI NG

The Profi NG offers the inspector every imaginable convenience. The position of the tab can be adjusted at two points to achieve an ideal working posture. The extensive range of accessories includes an umbrella that is attached to the Profi NG with magnets, a sun shield and a stool.

Integrated sensors and a meter counter at the back wheel allow the tracking of the device on the map in can3D® NG. The turnable laser enables the inspector to make measurements of manholes and drainage objects.

The device is lightweight and the handle on the back makes it easy to carry the Profi NG up and down stairs. The reels are mounted on the device with a handle and can easily be changed at any time.



Laser, light and camera



Operation by touch or stylus



Operating elements



ProTab and Profi NG are the power couple of the HD generation. Compatible with all digital cameras and crawler units, you are perfectly equipped for absolutely any situation.

The proTab is equipped with a laser for distance measurement, an integrated camera and an LED spot.

The software can3D® NG offers numerous functions such as working with house outlines, inserting plan templates, measurement functions and much more.

PRO
TAB

CAMERAS

The HD cameras convince with their extraordinary image quality. Flashed LEDs (except K-28 HD) provide excellent illumination and absolutely sharp images. The 1:1 format is ideal for perfectly imaging mainly circular pipelines.

The cameras feature sensor for registering the piperun while inspecting either at certain points like bends and branches or during the entire inspection.

Each model has its own specific features so that you can find the ideal camera for any purpose.



K-28 HD



K-35 HD



K-50 HD



K-60 HD



K-70 HD



CAMFLEX HD



S HD



6 mm



50 m



M HD



7 mm



50 m



L HD



8 mm



60 m



X L HD



9 mm



75m
100 m

REELS

As soon as the push cable is moved, the reel records the covered distance and displays it on the screen of the basic unit. Via the software, the position can be set to zero or adjusted as desired at any time.

The locked reel stop prevents the pushrod from unintentionally unwinding. A simple turn releases the reel lock. The free-wheel brake also regulates the smooth running of the pushrod.

The reel is mounted on the basic unit and connected via a plug-in connection. Thus, the reel can be removed or replaced at any time.

The reels are available in various types. The diameter and length of the pushrod vary to ensure ideal bend mobility and maximum reach in every area of operation.

PUSHBUDDY

Deflection pulley, clamping device and feed unit. These functions are combined in the PushBuddy in a single device, which is also small, lightweight and flexible to use. The PushBuddy is compatible with the HD-M, HD-L and HD-XL reels and is made ready for use in just a few steps and without any tools.

A quick-release fastener is used to open the device and thread in the push cable. After mounting the camera, the PushBuddy is inserted into pipe. Securing takes place by means of an adjustable clamping device with 100 kg contact pressure, which is driven by a powerful hoist motor and controlled via push buttons.

Extendable handle



Clamping device with motor



Exchangeable battery



Pulley



KR-200 HD



The camera does not have to be mounted – it is firmly connected to continuously adjustable lift arm. The pipe diameter is entered and the camera will automatically be centered in pipes from 200 mm to 800 mm diameter.

The crawler F-200 stands out due to its rugged power-train and simple control system. Four powerful EC motors drive each wheel individually. The speed settings can be adjusted to four different speed levels, and the built-in speed control keeps the desired speed.

The cable is guided over a lever with a built-in sensor. The lever's height adjusts according to the cable tension and the sensor identifies whether cable is to be given or rewound, thus offering several benefits for a survey: The crawler drives forward more smoothly and easily as the cable is always being unwound at a constant rate. When the crawler stops, the unwinding process comes to an immediate halt as well.

F - 200 HD

K R - 200 HD

SOFTWARE

Preparation

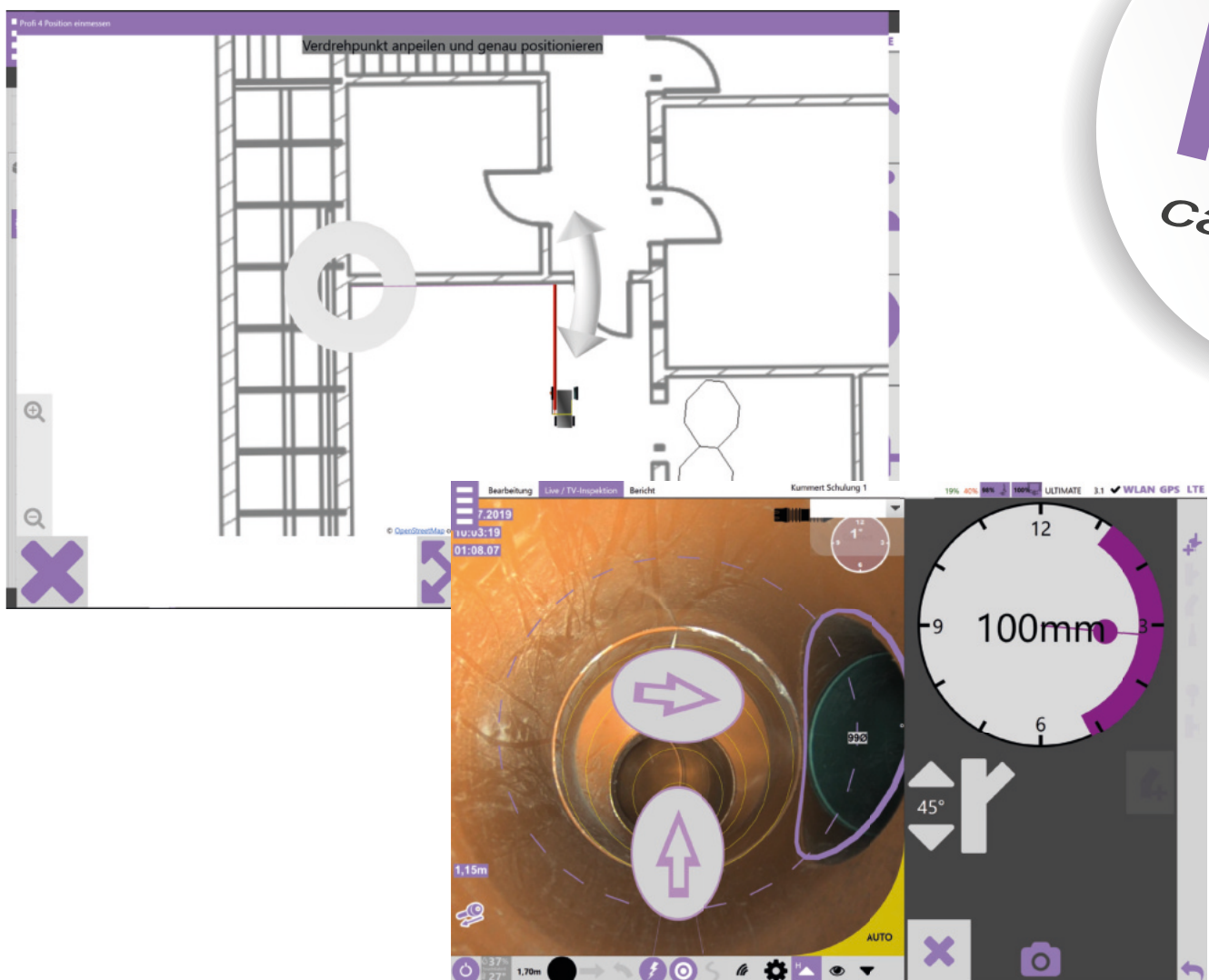
Compliant with various standards, all required basic data is entered. The project is saved in the cloud right from the start and therefore accessible to all users.

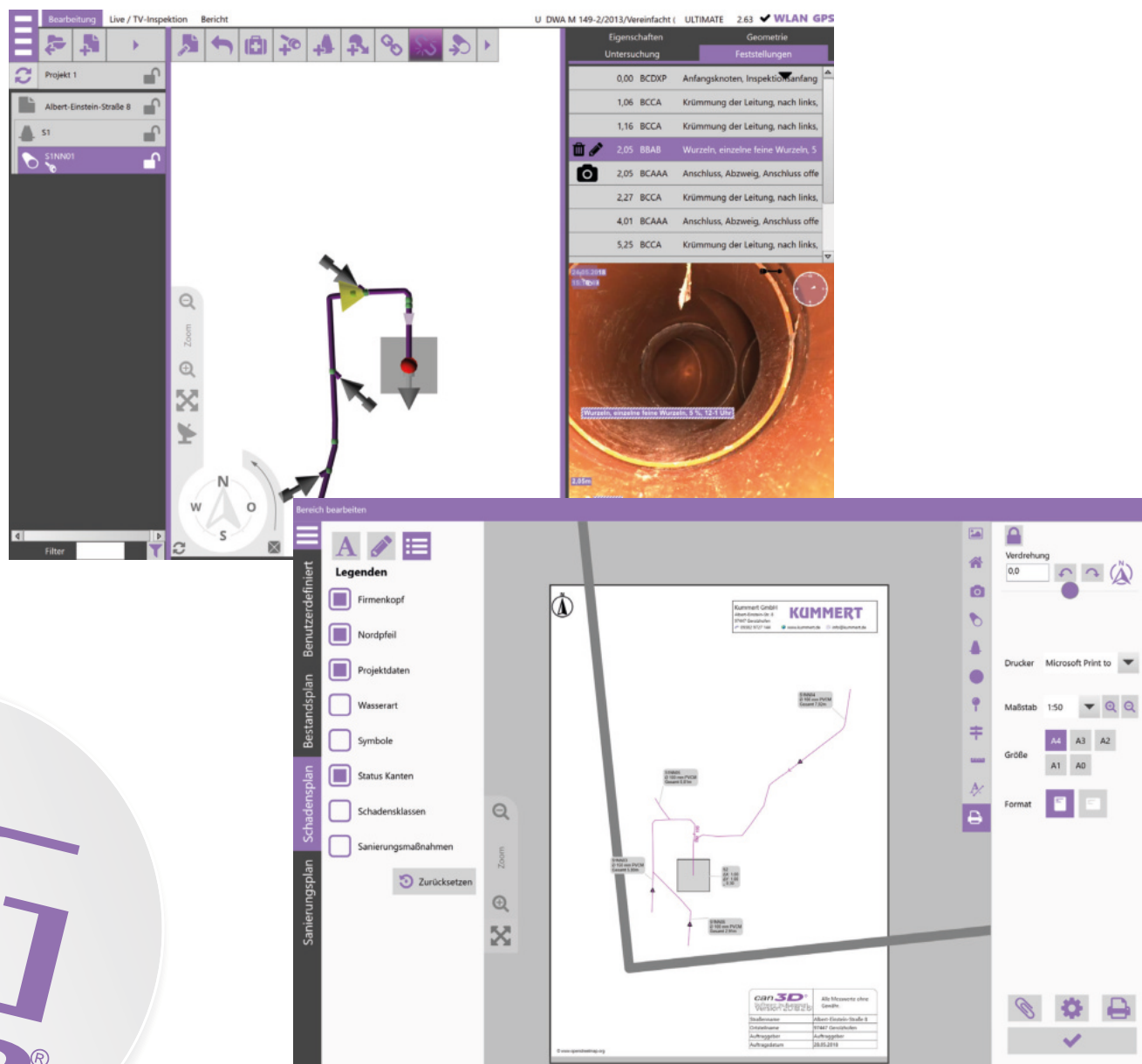
Plan and drawing functions ensure perfect orientation from the very first moment. If no plan data is available, house outlines or OpenStreetMap can be accessed. Manholes and drainage objects can be created and measured in advance.

Inspection

During the inspection, observations are entered and either immediately or subsequently inserted into the video. A selection list ensures simple and standard-compliant entry of the observations and makes it easier for the inspector to describe the condition.

The course of the pipeline is recorded during the inspection by entries or sensors and the complete pipeline network is displayed in 3D next to the live image. Imported plans and drawings ensure perfect orientation.





Post-editing

Corrections to basic data, editing of observations and adding new entries can be made quickly and easily. If the subsequent text overlay is selected when creating the project, the changes are also implemented in the video.

The 3D model of the pipe network is also fully editable up until the end. Incorrectly recorded bends and branches can be rectified. A complete rehabilitation plan can be created with just a few mouse clicks.

Documentation

Clear reports are automatically created from the entered information. With the help of the editor, these can be individually adapted according to the company design.

All settings for the output are conveniently made via the export wizard. This allows you to specify individually for each project what information the customer receives - reports, master data, CAD-compatible file formats and much more. In addition, a free online viewer is created.



MADE BY KUMMERT

For many sewer inspectors, systems made by KUMMERT stand for innovative inventions and constant improvements to existing products, in combination with a rather unconventional approach that clearly distinguishes the company from other manufacturers in the industry.

It starts with the company color purple, which is a quite untypical choice for the technical sector, and ends with the rapid growth that the company has experienced since its founding in 1988.

In the meantime, the company group has more than 100 employees, who ensure smooth operations in the individual departments. After all, all components of the inspection systems, from housings to circuit boards to software, are developed, manufactured and marketed in-house. The sale of the devices is also handled by direct marketing throughout Germany. Partner companies based abroad take over the distribution of the Kummert inspection systems.



KUMMERT

Albert-Einstein-Str. 8
97447 Gerolzhofen

Tel.: +49 (0) 9382 / 9727 - 0

info@kummert.de

WWW.KUMMERT.DE