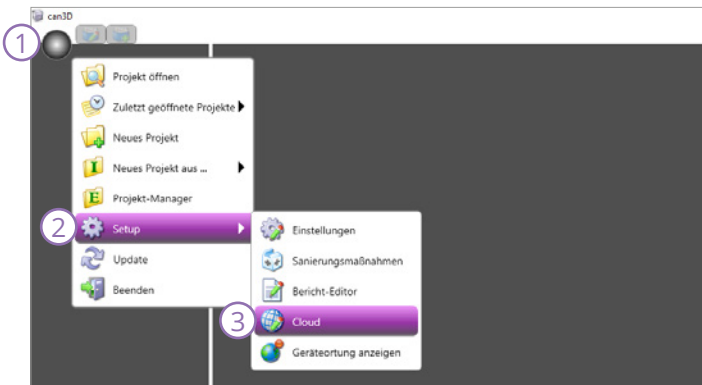


CONFIGURATION OF THE ONLINE SERVICES

Master Key

The Master Key is an USB-Dongle to provide access to can3D® Cloud setup. The Master Key is necessary to set up and administer the network environment, to administer projects and allocate users as well.

To open the online service administration



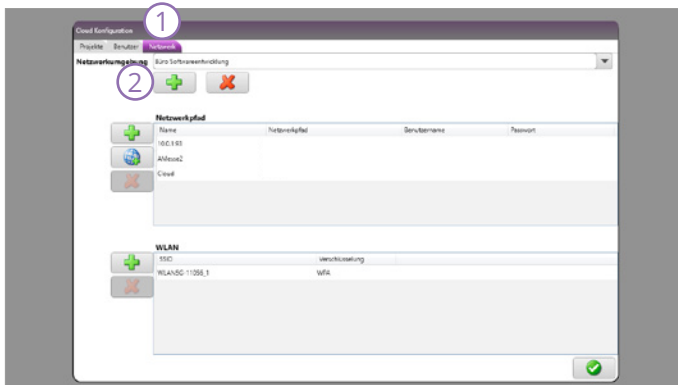
Please open the **main menu** (1) and click the **setup button** (2) und **cloud button** (3).

Router

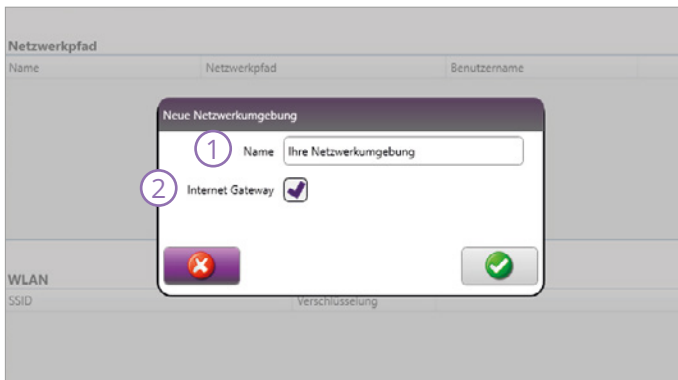
Your router will be pre-configured, if you got it from Kummert. If you would like to use your own router, please make sure it is based in sufficient distance and has the following configurations at one's disposal:

- dynamic IP
- DHCP Server: disable
- 5 GHz-ability (recommended)

Network environment setup



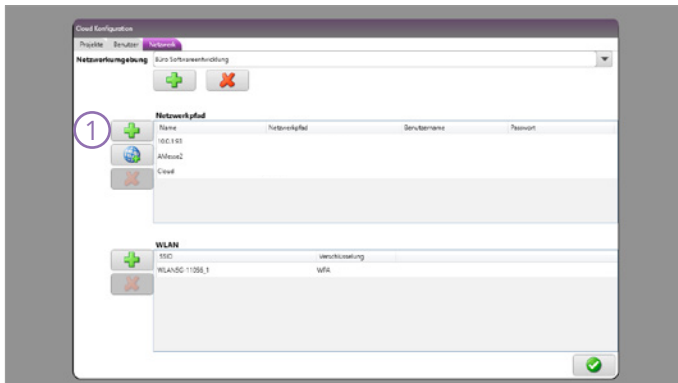
Please click the **network button (1)** und **green plus button (1)** after.



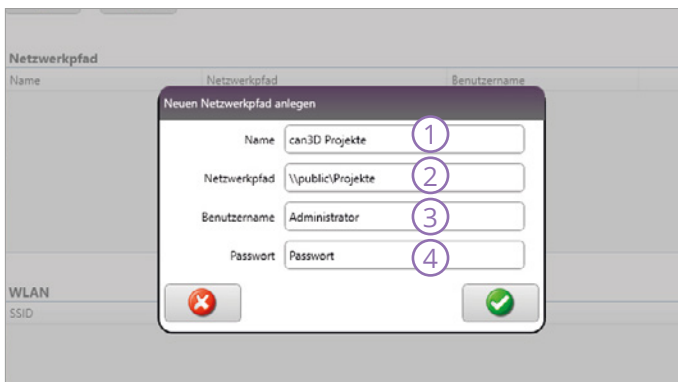
Name the **network environment (1)**. We recommend to use logical site designations (e.g. office, factory, ...) or other designations to reach a clear classification.

If your network environment shows no internet connection, unmark the tick of the internet gateway **(2)**.

Network path setup

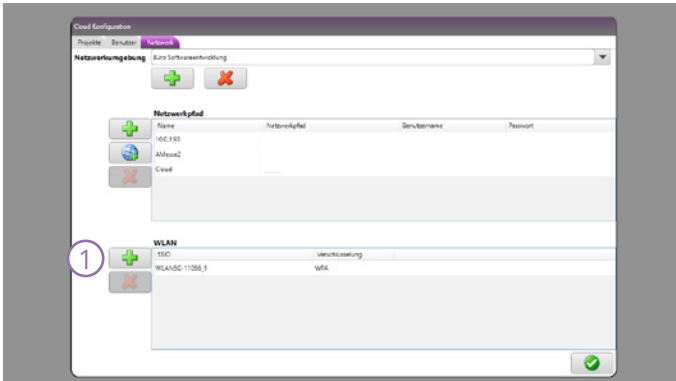


Please click the **green plus button (1)**.

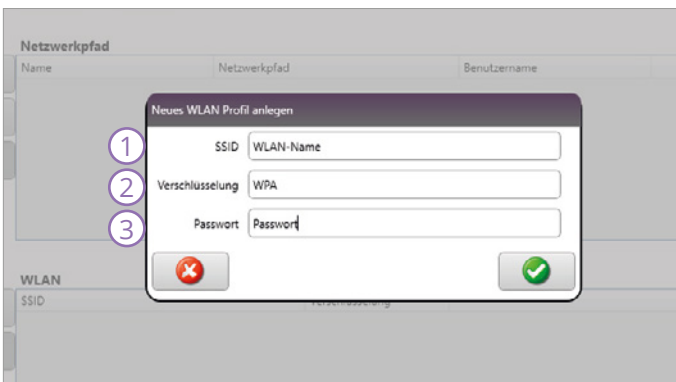


Please call a **name (1)** and enter the **network path (2)** for your projects. Name the **username (3)** of your computer, NAS oder server and enter the corresponding **password (4)**.

Wireless LAN setup



Please click the **green plus button (1)**.



Enter the routers **SSID (1)**. Enter the kind of **encryption (2)** and the **password (3)**.